

Woodmere II Offices, Columbia, MD



Film Type → OptiTune 05

24,000 Square Feet

Moderate Climate

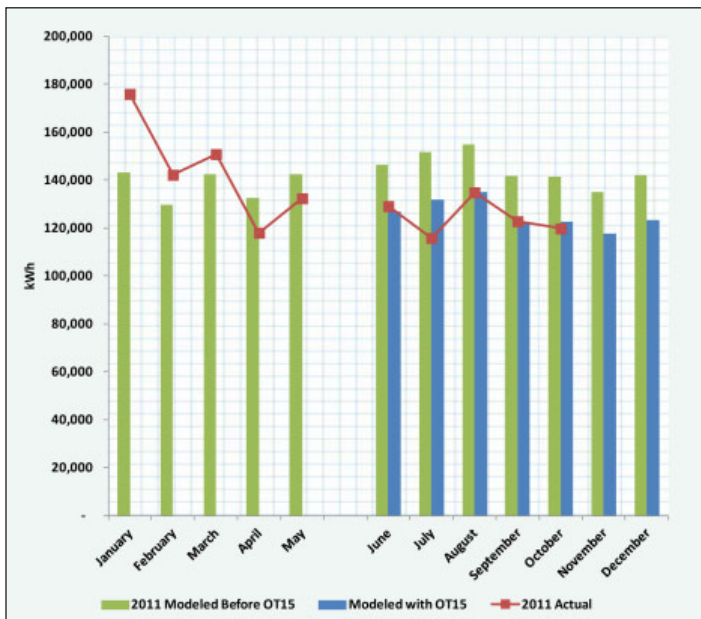
Verified Savings

Energy-Efficient Office Space Attracts Like-Minded Tenants and Reduces Competition

PROJECT TASK

As the commercial property market becomes increasingly competitive, McShea & Company is convinced offering a 'green' alternative to conventional office space will attract like-minded tenants. To accomplish the required improvements in energy efficiency, McShea installed OptiTune 15 on their Woodmere offices. As is often the question after installation of energy efficiency devices, will it actually perform to the design specifications – that is, can you perform Measurement and Verification (M&V)?

According to Efficiency Valuation Organization (EVO), "M&V is the process of using measurement to reliably determine actual savings created within an individual facility by an energy management, energy conservation or energy efficiency project or program." This report summarizes the M&V for this project – which is projected to save nearly 13% on energy costs (\$5.56 per square foot over the 15 year warranty period.)



Measurement & Verification

As our available M&V in the utility data presented below, the actual consumption and savings very closely tracked with the energy modeling performed prior to installation of OptiTune 15 (OT15).